



LABORATORY EQUIPMENTS



Anatomy

Physiology

Pathology

Microbiology

Biochemistry

Forensic

Community Medicine


Pharmacy

Charts & Model All Departments

Hospital Furniture

ANM/GNM/BSc Nursing

SINGHLA SCIENTIFIC INDUSTRIES

✉ singhla@rediffmail.com
 www.singhlascientific.com
www.polylabindia.com

+91-98967-20958



Company Profile

We are pleased to introduce our 2018-19 edition of SSI Catalogue

This new edition of our catalogue cover all departments of Anatomy, Physiology, Pathology, Microbiology, Biochemistry, Forensic, Community Medicine, Nursing & Pharm Cology Departments.

Started in 1956, today **SSI** is a name that is synonymous with quality & workmanship and it is has been our constant & Endeavour to improve further. Commitment, Efficient Services, Competitive Prices have always been our prime objective.

The firm belief in perfection has resulted in constant up gradation of technology and today all SSI product are totally being manufactured on CNC Machine with latest technology.

Hope the new edition our catalogue will be useful in right product that meets your needs.

Wish you a successful upcoming year.

Thanking You.

Devinder Singhal

Singhla Scientific Industries

Email : singhla@rediffmail.com

+91-98967-20958

SSI-01 Digital Microscopes

SPECIFICATIONS :

Cell Pad

- 8" Touch screen, high resolution (2592x1944) color LCD.
- Built-in camera with 5.0 Megapixel resolution.
- Pre loaded capture & measurement software.
- LCD screen can be rotated at 360° Horizontally, 90° vertically.
- OS : Android 4.1.1.
- CPU : Dual core 1.5 GHz, 1G(DDR3) Memory, Internal 5GB or external Mini SD card HDMI display.
- Output ports : one HDMI, one USB 2.0, one Mini USB.

Trinocular Observation Head

Siedentop observation head inclined at 30° rotatable at 360° light splitting ratio 8:2., Diopter adjustment ring on ocular tube (±5)., Interpupillary distance from 50mm to 75mm.

Eyepiece (Antifungus)

- Extra wide field 10X (paired) F.O.V. 22mm.

Objectives (Infinite) Anti Mold & Anti Fungus

Plan Achromatic 4X, 10X, 20X, 40X (S.L.), 100X Oil (S.L.)

Mechanical Body

- Co-axial focusing system. PRE-FOCUSING LEVER & TENSION ADJUSTMENT RING.
- Reverse angle quintuple nosepiece revolves on ball bearing. Slot for Polarizer.
- Mechanical stage size 140mm x 132mm having low positioned controls on ball bearing guide ways.
- Illuminator Condenser N.A. 1.25 with adjustable iris diaphragm.



SSI-02 Binocular Microscope

The future of classroom microscopy with crisp sharp image, very much convenient in working, easy to move, light weight, durability, ergonomic design and affordable prices. It became an ideal instrument for school labs, medical institutes, colleges and universities.

SPECIFICATIONS :

Viewing Head	: Binocular tube, 45° inclined, 360° rotatable
Eyepiece	: Wide Field eyepiece WF 10x, FOV 18mm
Nosepiece	: Quadruple nosepiece (Ball bearing type)
Objective	: QUSP Series Semi-PLAN DIN Objective 4X, 10X, 40X (S) and 100X Oil, (S)

Mechanical Stage : Graduated Mechanical rectangular stage, size 140 x 140mm with cross travel 90 (X) x 65mm (Y) on ball bearing with co-axial controls

Focusing Movement : Separate coarse & fine focusing mechanism.

Condenser: Moveable ABBE Condenser, centerable, NA 1.25 with aspheric lens. Iris diaphragm and special FROSTED white filter, Swing-in and swing-out filter holder

Light Source : Illumination system LED 3.5W 3V with intensity control regulator, Universal power supply 110V – 240V, CE approved.

Carrying Case : Styrofoam Packing

Supplied with : User manual, Vinyl Dust cover, Cleaning cloth and 01 units Fuses

Optional Accessories: Wooden carrying case, Trinocular Head, QUSP series DIN Semi-Plan objectives 20x, 60x SL, WF 15x, WF 20x, Pointers & Micrometer Reticules, Phase contrast, Polarizing, Fluorescence and Dark Field attachments, Digital USB Cameras (1.3MP, 3MP, 5MP, 14MP) with in-built adaptors, Digital Cameras and DSLR Cameras with adaptors, Illumination System Halogen 6V 20W.





SSI-03 Co-Axial Binocular Microscope

Frame	All aluminum pressure diecasted body.
Paint	P.U. coating in light cream shade.
Nose Piece	Quadruple ball bearing nosepiece.
Observation Head	360° rotate able and 45° inclined head with all anti-fungus coated prisms.
Focusing System	Co-axial focusing system with three planetary gears assembly.
Mechanical Stage	CXL Ball bearing double-plate mechanical stage for smooth functioning.
Condenser	Bright field sub stage condenser having 1.2 N.A.
Eyepieces & Objective	Set of 4X, 10X, 40X and 100X a paired set of 10X wide field eyepieces.
Illumination	6V/20W halogen lamp need 220V and 50Hz supply. (Optional LED illumination system available with battery backup.



SSI-04 Binocular Microscope

With Binocular head, quadruple revolving nose piece, detachable graduated mechanical stage and bright field condenser N.A 1.25 with iris diaphragm, illumination with built in step down transformer and tungsten bulb 6V, 21 watt in box with lock and key, complete with optics. Hygienic Eye Pieces 5X, 10X and 15X (any two pair) Achromatic objectives 10X, 40X, & Oil Immersion S/L



SSI-05 Medical Microscope

Vertical monocular body, inclinable to horizontal level of 90° for projection. Mechanical tube length 160mm. Coarse adjustment by rack & pinion, fine adjustment by graduated lever system with drums. Triple revolving nose piece. Iris Diaphragm with bright field condenser N.A. 1.2 movable on rack & pinion. Sub stage reflector of 50mm dia replacement with microscope lamp. Superb in finish and workmanship, complete with mechanical stage & beautiful storing cabinet.

Optical Combination

Hygienic Eye pieces 5X, 10X & 15X (any two)
Achromatic Objectives 10X, 45X & 100X



SSI-06 Student Microscope

Triple nose with coarse adjustment by rack & pinion. Fine adjustment by lever system with drum. Fixed condenser Iris diaphragm with optics comprising of two eye pieces (10x, 15x) & objectives (10x & 45x). Packed in thermacol box.

SSI-06B Same as above packed in nicely polished wooden box with lock & key.



SSI-07 Projection Microscope

Our projection microscope has heavy duty body, coarse & fine focusing system & triple revolving nosepiece. A plain stage 120x120mm with two spring clips to hold the slide can be provided with attachable graduated mechanical stage (optional accessories)

For the clear observation of slides, a 150mm diameter screen attached to microscope tube.



SSI-08 Stereo Zoom Microscope

Eyepiece

- Extra wide field 10X (paired) F.O.V. 20mm.

Objectives

- 2X & 4X

Magnification Range

- 20X-40X

Illumination System

- Incident and transmitted light systems with LED lamps.
- Both lights are regulated with power supply and has separate brightness controls.



SSI-09 Dissecting Microscope

Dissecting Microscope Heavy round base with nicely designed body, sensitive focusing is done by rack and pinion. A joint revolving arm is provided for moving magnifying lens over full area of stage. It is Easily replaceable by a special Bull Eye lens 80mm dia to increase the field of vision. A Plano concave mirror is fork for light reflection.



SSI-10 Grossing Work Station

Grossing work station made of High grade stainless steel. Continuous air flow along entire work area. Provided with Dictaphone, camera holder on railing system, magnifying glass light magnifier with flexible arms. Document holder for requisition forms, literatures etc. Magnetic instruments holder, paper towel holder, polythene cutting board. Mixer tap for hot and cold water sink with tap. Sturdy perforated insertable work plate. Sprinkle system with adjustable valve for bath sanitation located underneath the perforated working plate and Drawers.

Features :

- Made of high grade stainless steel.
- Continuous air flow along entire work area.
- Provided with Dictaphone, camera holder and railing system.
- Magnifying glass/ light magnifier with flexible arms.



SSI-11 Semi Automatic Microtome

SPECIFICATIONS:

Section Thickness Setting
Setting Values

MRM-ST

0.5-100μm
From 0.5μm-5μm in 0.5μm increments
From 5μm - 20μm in 1μm increments
From 20μm - 60μm in 5μm increments
From 60μm - 100μm in 10μm increments

Trimming Thickness Setting
Specimen Retraction Range
Minimum Setting Value

1μm - 600μm
5 - 100μm in 5μm increments
0.5μm

Object Feed
Vertical Stroke
Specimen Horizontal feed
Max. Specimen Size

28mm
60mm
28mm
50 x 50 mm

Operation
Dimensions (L x W x D)
Weight

Semi-Automatic
(520 x 430 x 330) mm
24kg

Nominal Voltage
Power Draw

220V, 50Hz/110V, 60Hz
150VA

Microtome At A Glance

- LCD Display with Feather touch keypad
- Cutting / Trimming Mode
- Fast Forward/ Backward Function
- Increase/Decrease Section Thickness
- Retraction can also be adjusted
- Section Counter/Section Thickness Display
- Motorized Feed Drive
- Finger Protection Guard



SSI-12 Rotary Microtome Spencer Type

- Section Thickness Display
- Section Thickness Adjustment Knob
- Coarse Feed Handwheel
- Adjustable Knife Angle
- Auto Retracting Mechanism
- Anti-Roll Plate
- Spacious Section Waste Tray
- Standard/Universal Cassette Clamp

FEATURE VALUE

Section Thickness Setting
Setting Values

0.5-60 microns
From 0.5-2 micron in 0.5 micron increments
From 2-20 micron in 1 micron increments
From 20-60 micron in 5 micron increments

Trimming Thickness
Object Feed
Vertical Stroke
Specimen Orientation
Max. Specimen Size

10-60 microns
28mm
60mm
Horizontal 8 degrees, Vertical 8 degrees
60 x 50 mm



SSI-13 Tissue Embedding Station

Tissue Embedding & Cooling System features ease of operation, spacious work surface and large container capacity. It has five independent microprocessor controlled heating zones, paraffin dispenser, cooling plate, foot switch and heated holder and work platform. The unit incorporates paraffin plate can be used separately or combined depending on user requirement. Each heating and cooling function is controlled by accurate digital thermostats heating up to $+70^{\circ}\text{C}$, cooling down to -20°C with removable stainless steel basin to facilitate cleaning operations.



SSI-14 Microprocessor Control Linear Slide Staining Machine (18 Stations)

Linear Slide Stainer is an enclosed compact bench top unit. It has a user friendly software. The lowering and lifting of a slide carrier is smooth and noiseless.



SSI-15 Tissue Processor



- Leather foot key pad
- Digital display for adjusting time sequence
- Battery back up to retain data
- 12 stage timing sequence can be programmed with each step of 1 minute to 16 hours 39 minutes (999 min.)
- • Denaturation of 1 hour to 99 hours
- • 2 Electronically controlled bath 100°C to 800°C
- • 1 or 2 Stainless steel basket
- • 24 tissue containers (Cassettes)
- • 1 or 2 Stainless steel basket rotors

Accessories (Optional)

- Additional Basket Rotor
- Tissue Capsule with sliding cover
- Tissue Capsule Basket SS
- S Shape divider for Tissue Capsule
- V Shape divider for Tissue Capsule
- Additional wax bath

SSI-15 Wooden Slide Box



SSI-16 Wooden Slide Cabinet



SSI-17 Slide Tray Aluminum



SSI-18 Block Cabinet





SSI-19 Biosafety Cabinet (S.S. & M.S.)

These Biological Safety Cabinet are made of Stainless Steel 304 Grade.

These Biological Safety Cabinets are class II/Type 2 and are designed for universities, research laboratories, pharmacies and pharmaceuticals companies to protect both users and procedures from contamination when working with biological fields.

How it Works : Minimum airflow velocity is 100 fpm (0.51 m/s) through face opening. HEPA filtered downflow air is a portion of the mixed downflow and inflow air from a common exhaust plenum. All contaminated ducts and plenums are under the negative pressure.

SSI-20 Laminar Air Flow S.S. (Horizontal)

Made of S.S. 304 complete with HEPA Filter and Pre Filter, motor blowers static manometer, cock for gas and air or vacuum line front doors are made of plexiglass transparent thick sheet built in U.V. tube. Work table is illuminated by florescent light. Two legs table top and two table supports are detachable and can be taken out and fixed within minutes. Front door can be kept full open, half open, fully closed as desired. The equipment is fitted with safety attachments of international standards.

OPTIONAL : MICROPROCESSOR BASED DIGITAL CONTROLLER

FEATURES OF CONTROLLER :

1. U.V LIGHT TIMER UP TO 99 MINUTES.
2. BLOWER TIMER UP TO 24 HOURS.
3. U.V AGE DISPLAY.
4. 9 STEP SPEED CONTROL.
5. BUZER ALARM SYSTEM



SSI-21 Fume Cupboard

Fume Cupboard outer inner SS chamber with front glass window counter balance & heavy duty blower provided with stainless steel sink, water tap, florescent tube & cupboard at the bottom.

SSI-21B Fume Cupboard

Same as SSI-21 but complete SS Body.



SSI-22 Spirometer

We are offering Student Spiro Meter to our clients. The product has a chain attached which compensates for counter balance to flat through pulley calibrated to denote volume inlet and outlet tubes. The chamber is made with stainless steel corrugated rubber tube and mouth piece. Vital Capacity 6 Litre

SSI-23 Digital Spirometer

Weight	: 1.9 Kg
Display	: FSTN graphic, 320 x 240 pixel
Power Supply	: Rechargeable battery and mains power
Temperature sensor	: Semiconductor (0-45deg C)
Flow sensor	: Bi-directional digital turbine
Flow range	: +/-16L/s - Volume accuracy +/-3% or 50mL
Flow accuracy	: +/-5% or 200mL/s
Dynamic resistance	: Greater than 0.5 cmH2O/L/s
Connectivity	: USB, RS232 and Bluetooth
Printer or paper	: Thermal, 4.4 inch (112 mm) width
Mouthpieces	: phi 1.18 inch (30 mm)
Dimensions	: 12.2 x 8.1 x 2.6 inch
Minimum Order Quantity	: 1 Unit



SSI-29 Student Physiograph

- Indigenous Single Channel (3+1)
- Easy to Operate-even by a beginner
- Designed on the concept of coupler for specific recordings
- High Sensitive, Rugged, Versatile, Accurate, Reliable
- Data Acquisition System to convert data from Physiograph to a computer with HRV and independent ECG recording system.
- Facility to record Bio-Electrical potential e.g. EEG, ECG, ENG, EMG, Pulse, Respiration, Blood Pressure etc.

SSI-26 Polygraph

- Up to 16 channel Acquisition
- Parameters: ECG, EEG, EOG, EMG, ENG, Nerve Conduction, PFT
- Wave over-lap facility
- Pulse analysis
- Heart rate variability analysis
- Identify frequency component of EEG signal delta, theta, alpha and beta with FFT function
- PC Connectivity

SSI-27 Digital Audiometer

- Type of Audiometer, Diagnostic, Clinical, Software Audiometers
- Grade Medical Grade
- Features Portable, Digital, PC Controlled





SSI-10 TLC Kit

- Applicator made of electroplated brass/aluminium
- Plate Rack or aluminum Rack This rack holds ten 20 x 20 cm plates which can be stacked horizontally
- Perspex base
- Spotting template made of Perspex
- Glass Plate for T.L.C. (Glass plate with polished edges, about 4mm thick)
- Reagent Sparayer (all glasses)
(This all glass reagent sprayer is a low cost yet efficient alternative to the TLC sprayer. It comes with a rubber pump but may also be operated from a compressed air or Nitrogen Supply.)
- Developing tank with lid (Borosilicate Glass)
- Scriber for marking lines, complete along with instruction manual.
- Micro Pipette



SSI-11 Ultra Violet Inspection Cabinet (U.V. Cabinet)

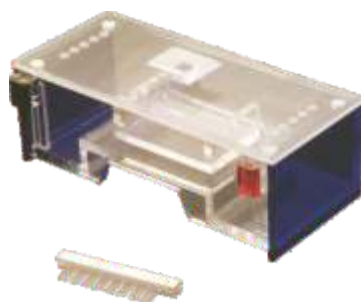
For visualization of test objects under UV tubes having long wavelength (365nm) and short wavelength (254nm) as desired. A fluorescent tube is fitted to the unit for day light visualization.

It works on 220/230Volts AC supply.



SSI-12 Chromatography Cabinet

Made of teakwood with glass on all four sides and on top. Internal surface is wax coated for solvent resistance. Hinged top provided with rubber gasket for air tight closing. Window with air tight door in lower position. Heavy castors provided for easy movement. Finished in lacquer polish. Supplied with two stainless steel troughs and 4/6 glass rods.



SSI-13 Submarine Electrophoresis

This mechanism answers the demand for small. This economy model minimized the cost of buffer. This elementary unit with fixed platinum electrode assembly consists of perforated lid for vapors, gel trays 5x7cm. (2 nos.) 10x7cm. (1 nos.), 8 well comb 1.5mm (2 nos.), 3 well comb 3.0mm, (1 no.) comb stand connecting cord & instruction manual.



SSI-14 Vari Pack

Vari Pack is very simple to operate. It is very ideal for student practical classes & routine clinical work. It is designed to give 50, 100, 200 or 250 volts constantly indicated by LED on each point. Its maximum current is up to 100 mA.



SSI-15 Vertical Slab Gel (Student)

This mechanism electrophoresis 8x7cm. Gel can be casted of 0.5, 1.0 or 1.5mm thickness in this mechanism. Student Model minimizes the cost of buffer.

The elementary unit consists of detachable platinum electrode assembly (2 nos.), Glass Plates Notched & Rectangular 1 Set, Teflon Comb 7 wells 1mm (1 no.), Spacers 1mm (3 nos.) clamp with screw (1st), gasket fixed, leveling screws & connecting cord.



SSI-16 Paper Strip Horizontal

Paper Strip Electrophoresis Apparatus Horizontal Model can accommodate 6 interlock switch breaks the current of both electrodes while the lid of mechanism is uplifted. Both electrode sections have capacity of 550ml and each are provided with transvers baffles to minimize. Diffusion of buffer which is in contact with ends of paper strip. Polarity of the electrode is indicated by two pilot lamps provided on the front panel. The complete mechanism is fitted with leveling screws. The elementary unit consists of anode & cathode reservoir with platinum electrodes, special glass lid (1No.) & Power Cord.



SSI-17 Paper Strip Vertical

This traditional mechanism for general analysis of many samples in clinical laboratories. 6 paper strip can be placed at required height. Agarose gel can also be run in micro slides. 150+150ml buffer required to run the sample.

The elementary unit consists of Anode & Cathode reservoir with Platinum electrode assembly,



SSI-18 D.C. Power Supply Digital

Stabilized D.C. Power Supply this is very ideal to accomplish for routine works course & fine control knobs are provided to set at any voltage from 0 to 300 & constant current up to 100 mA. Provided with digital control & display. This is provided with short circuit & over load protection with polarity reverse switch.



SSI-19 UV- Transilluminator

An ultraviolet (UV) Transilluminator is a standard piece of equipment used in life science laboratories used for visualization of target DNA's and proteins. The UV Transilluminator works by existing high levels of UV radiation through the viewing surface. The key application for a UV transillumination is for Visualization of DNA and protein agarose and polyacrylamide gels after electrophoresis gels can be directly placed onto the UV transilluminator, wavelength will vary on your particular application.

SSI-20 Autopsy Table

Autopsy table are specially for all kinds of postmortem work. The construction of these table incorporates state-of-the-art engineering, heavy gage stainless steel and conveniences. Autopsy stainless steel table mounted on stainless steel tubular stand. Scientifically designed for maximum efficiency.

Available in different sizes as per requirement.



SSI-21 Mortuary Chamber

Fitted with S.S. inner walls and outer MS painted trays travel on rollers fitted with ball bearings, trays made of S.S. sheet to carry bodies are provided with handles. Complete with digital temp. controller to work on 220 volts A.C. supply.

Capacity	Temp.
A Single Body	2 ⁰ to 5 ⁰ C
B Two Bodies	2 ⁰ to 5 ⁰ C
C Three Bodies	2 ⁰ to 5 ⁰ C
D Four Bodies	2 ⁰ to 5 ⁰ C
E Six Bodies	2 ⁰ to 5 ⁰ C



SSI-22 Bone and Meat Cutting Machine

For injecting Formaldehyde solution in to Cadaverous at much higher speed than normal gravity process. Unit is fully covered & mounted on a portable trolley having four castor wheels for easy movement.



Cadaver Injector



Bone and Meat Cutting Machine

SSI-23 Dissection Table & Cadaver Tank



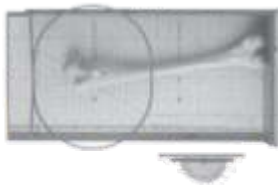
Dissection Table



Deadbody Preservation Tank



Postmortem Instrument Set

**SSI-24 Anthropometer****SSI-25 Goniometer****SSI-26 Cubic Craniophor****SSI-27 Osteometric Table****SSI-28 Mandibulo Meter****SSI-29 Chest Depth Caliper****SSI-30 Skin Fold Caliper****SSI-31 Craniometer****SSI-32 Specimen Jar Rectangular With LID****SSI-33 Dead Body Weighing Scale**

SSI-34 Hydraulic/Mechanical Operation Room Table with Radio Lucent Top

These OT tables are intended for a wide range surgical procedure as they are featured with technologically advanced components with the can be adjusted to various positions with the use of optional attachment. The tables are designed with a foot operated pump for ease of mobility and stability.

SPECIFICATION

- Table Length - 1960mm
- Table Width - 530mm
- Table Height - 760 to 1000mm
- Back Up/Down - $60^{\circ}/40^{\circ}$
- T'burg/Rev T'Burg - $25^{\circ}/20^{\circ}$
- Later Till L/R - $20^{\circ}/20^{\circ}$
- Head Up/down $60^{\circ}/90^{\circ}$ (Manual)
- Leg Down - 90° Manual
- Kidney Elevation - 0 to 120mm



SSI-35 Mobile Operation Room Light LED 300mm Dome

The operation theatre lights are designed under medical standards to ensure excellent functionality. Specifically designed for hospitals and clinics they provide a clear view & precise light intensity.



- #### FEATURES
- Type - Mobile
 - Light Head Diameter (cm) - 30
 - Maximum Power Consumption (W) - 10.5
 - Average LED Service Life - 50,000(Hours)
 - Luminance (Lux) - 60,000
 - Light Field (cm) - 12 - 25
 - LED Number (Pcs) - 21
 - Color Temperature (K) - 4300
 - Color Render index (RA) - 95
 - Luminance Control -
 - 10% - 100%, 9 Levels
 - Illumination Intensity(cm) - 140



SSI-36 Pharmacology Manikin

FEATURES

- Sublingual
- Naso-Gastric Passage
- Intra Muscular Injection at Gluteous Maximums Muscles
- Intra Muscular Injection fro Deltoid
- Intra Venous Sites in Fore Arm
- Ribs and Intracardiac Injection Site
- Provision for Enema
- Provision for Long Tube of PVC for removal of fluid, at the Intravenous on Fore Arms
- Naso-Gastric passage connecting esophagus & stomach for ryles tube introduction
- Routes of Drug Administration
- Veins on the Dorsum of foot in both Male and Female

All internal Visceral Organ Present in Place:

Heart, Lungs, Liver, Stomach, Kidney, Bladder Catheteration Male
Bladder Chatheration & International Application





SSI-37 Bed Side Locker (Range-Premium)

FEATURES

- Compact Design
- ABS Plastic Mode Locker
- With Drower and Cupboard
- Mobile on Castors



SSI-38 Bed Side Locker (Range-Delux)

FEATURES

- 3 Side Covered Shelf
- With Drawer & Cupboard
- S.S. Top Fixed
- Mobile on 2 Back Castors

SSI-39 Bed Side Locker (Range-Regular)

FEATURES

- Legs Fitted on Synthetic Shoes
- Heavy Gauge M.S. Cupboard
- Epoxy Powder Coated With S.S. Top

SSI-40 Bed Side Locker (Range-SS)

FEATURES

- 3 S.S. Shelves with Railings
- Mounted on Synthetic Shoes
- Sturdy Structure

SSI-41 Plain Bed

FEATURES

- Heavy Structured Bed

Made with sturdy steel fame and body, this perforated plain bed offers flat surface. They offer uniform support to the body and allow complete rest.

SSI-42 Semi Fowler Bed



SSI-43 Surgical Instrument
Trays (S.S. with Cover)



SSI-44 Knife Dish



SSI-45 Kidney Tray S.S.



SSI-46 Bed Pans
With Cover S.S.



SSI-47 Urinal S.S.





SSI-48 Mayo's Instrument Trolley (Range-Premium)

These instrument trolleys are made from high-grade stainless steel with sturdy construction to ensure reliability and durability. Fitted with wheels they are easy to move around. They are easy to clean and offer perfect assistance to doctors and nursing staff.

FEATURES

- Framework of Complete S.S.
- Removable Tray of S.S.
- Over Bed Type
- Mobile on Castors



SSI-49 Mayo's Instrument Trolley (Range-Regular)

Strong and durable, these instrument trolleys are very useful for doctors and nursing staff during surgery and treatment of patients. Made from premium grade steel, they offer convenience.

FEATURES

- Framework of Complete S.S.
- Framework of M.S. (E.P.C.)
- Over Bed Type
- Mobile on Castors



SSI-50 Instrument Trolley with Bowl & Bucket (Range-Premium)

Ideal for medical professionals, these trolleys are easy to keep instruments during procedures. They are made with bowl and buckets to maintain a hygienic environment.

FEATURES

- Made of Complete S.S.
- Two S.S. Shelves
- S.S. Bowl & Bucket
- Mobile on Castors



SSI-51 Instrument Trolley All SS(Range-Delux)

Sleek and stainless steel, these trolleys are used to keep the instruments used by doctors during medical procedures. With wheels installed, they provide easy mobility.

FEATURES

- Made of Complete S.S.
- Two Fixed S.S. Shelves & S.S.
- Railings
- S.S. Railings on 3 Sides
- Mobile on Castors



SSI-52 Food Trolley Adjustable Manual (Range Delux)

FEATURES

Laminated Top, Manual Height Adjustment, Mobile on Castors
Corrosion Resistant, Excellent strength and stability



SSI-53 Instrument Trolley EPC with SS Shelves (Range-Regular)

Made with stainless steel shelves and fitted with wheels, these trolleys are easy to move and offers a stable surface. They are mainly used to assist doctors and nursing staff.

FEATURES

- M.S. Framework EPC
- Two Fixed S.S. Shelves & S.S.
- Railings
- S.S. Railing on 3 Sides
- Mobile on Castors



SSI-54 Revolving Stool-All S.S. Top Cushioned (Range-Premium)

FEATURES

- Complete S.S. Tubular Pipe Construction
- Fitted with Cushioned Top
- Legs Fitted to with a Foot Rest Ring
- Mounted on Synthetic/Rubber Shoes



SSI-55 Revolving Stool-All S.S. Top S.S. (Range-Premium)

FEATURES

- Complete S.S. Tubular Pipe Construction
- Fitted with S.S. Top
- Legs Fitted to with a Foot Rest Ring
- Mounted on Synthetic/Rubber Shoes



SSI-56 Revolving Stool-EPC Top S.S. (Range-Regular)

FEATURES

- M.S Tubular Pipe Construction (E.P.C.)
- Fitted with S.S. Top
- Legs Fitted to with a Foot Rest Ring
- Mounted on Synthetic/Rubber Shoes



SSI-57 Baby Cradle (Range-Regular)

FEATURES

- Tubular Pipe Frame
- Mounted on 100mm Castors
- Mattress Covered with Leather Foam
- Swing Motion



SSI-58 Patient Carrying Trolley

FEATURES

- Mild Steel Tubular Frame
- 150mm Heavy Duty Castors
- Removable Stretcher
- Epoxy Powder Coated
- Corrosion Resistant



SSI-59 Crash Cart

BENEFITS

- Framework Made of M.S. Apoxy Powder Coated
- 3 S.S Shelves & Polystyrene Lockable Storage
- Built in Oxygen Cylinder trolley E.P.C.
- Mobile on Castors



SSI-60 Saline/I.V. Stand With 2 Hooks All SS

FEATURES

- Made of Complete S.S.
- Heavy Tubular Base
- Mobile on Castors
- Manual Height Adjustable with 2 IV Hooks



SSI-61 Suction Apparatus

FEATURES

- Cabinet Model with S.S. Top
- 0.25hp Motor Connected to Highly Efficient Oil Immersed Pump
- Two 1.5ltrs Suction Bottles
- Corrosion Resistant
- Mounted on wheels



SSI-62 Examination Couch

Size	: 183L x 50 W x 82 H cms
Color	: Standard
Condition	: New
Is It Folded	: Non Folded
Rustproof	: Yes
Application:	Clinic/ Hospital
Type	: Drawer and locker
No Of Drawer	: 3
Material	: MS/SS

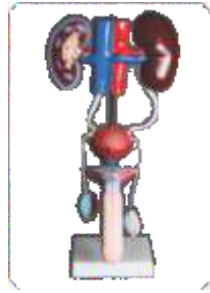


SSI-63 Examination Table

Size	: 72 (L) * 24 (W) * 32 (H) inches
Shape of Framework	: Rectangular
No. of sections	: 2



FEMALE URINOGENITAL SYSTEM



MALE URINOGENITAL SYSTEM

HUMAN SKIN MODEL
70 Times Enlarge, 3DHUMAN FEMALE PREGNANT
PELVIS SECTION WITH FETUS

ADULT MALE PELVIS



ADULT FEMALE PELVIS



HUMAN BIRTH MODEL

SKULL COLOUR
PAINTED

FOETAL SKULL

SYMPATHETIC NERVOUS
SYSTEM

HEART MODEL LIFE SIZE

MAGNIFIED
UTERUS MODEL

HUMAN EAR



Joint Set



Full Body Anatomy

HUMAN SKELETON ARTICULATED
WITH STAND

HUMAN LUNGS 2 Parts

HUMAN EMBRYOLOGY
SET OF 9 MODELSHUMAN TORSO MALE/FEMALE
23 PARTSHUMAN KIDNEY MODEL
2 Parts, On Stand

HEAD WITH NECK

LUNGS MODEL
WITH LARYNX 7 Parts

HUMAN EYE



HUMAN EYE WITH ORBIT



BRAIN MODEL



MODEL FOR COURSE OF DELIVERY
(LEOPOLD MANEUVERS SIMULATORS)



NEWBORN INTUBATION BABY MODEL



HIGH QUALITY NURSE TRAINING DOLL (MALE) UNISEX
HIGH QUALITY NURSE TRAINING DOLL (FEMALE) UNISEX



VISIBLE EXPECTANT
MOTHER ANATOMY MODEL



INJECTABLE TRAINING ARM MODEL



VULVA SUTURING TRAINING SIMULATOR



ADVANCED FULL FUNCTIONAL NEONATAL
NURSING & CPR MANIKIN



ADVANCED NURSING & WOUND CARE MANIKIN (MALE)
ADVANCED NURSING & WOUND CARE MANIKIN (FEMALE)



BUTTOCK INJECTION MODEL



ADVANCED SURGICAL SUTURING ARM MODEL



IUD TRAINING MODEL



ADVANCE GYNAECOLOGICAL TRAINING



ADVANCED SURGICAL SUTURE LEG



ADVANCED FEMALE CONTRACEPTION
PRACTICE MODEL



CHILD BIRTH SKILL TRAINING SIMULATOR



ADVANCED NURSING BABY UNISEX



MALE CONDOM TRAINING MODEL



AIRWAY INTUBATION SIMULATOR



MIDWIFERY TRAINING SIMULATOR



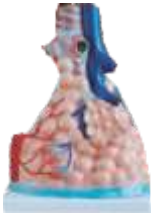
GYNAECOLOGICAL EXAMINATION
MODEL



MODEL OF THE ANATOMICAL
NASAL CAVITY



LIVER, PANCREAS AND DUODENUM MODEL



MAGNIFIED PULMONARY ALVEOLI MODEL



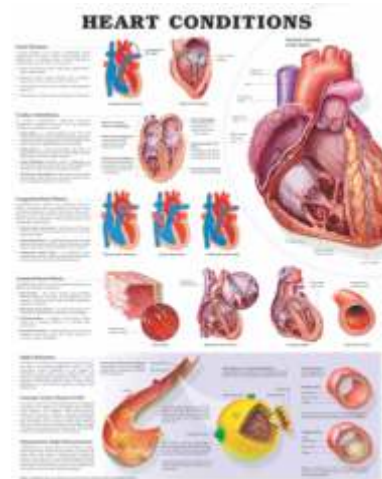
MAGNIFIED HUMAN LARYNX MODEL



CIRCULATORY SYSTEM



DIGESTIVE SYSTEM



AED SIMULATOR AND
CPR MANIKIN SET



ADVANCE CHILD CPR
TRAINING MANIKIN



HALF BODY CPR TRAINING MODEL (MALE)



WHOLE BODY BASIC
CPR MANIKIN WITH
MONITOR & PRINTER





SSI-59 ESR Stand

- Made from sheet metal and finished in white enamel. The stand can
- Hold 6 ESR tubes.
- Positions are numbered for easy identification.



SSI-62 Wintrobe Tube Stand for Six Tubes

- Made from sheet metal and finished in white enamel. The stand can
- Hold 6 Wintrobe tubes.
- Positions are numbered for easy identification.



SSI-63 Hemoglobinometer

Hemoglobinometer with round tube Indian
Hemoglobinometer with round tube German



SSI-64 Haemocytometer

Haemocytometer with rohem silver line/marienfeld german
chamber RBC & WBC pipettes.



SSI-66 Blood Pressure Apparatus Mercurial



SSI-67 Blood Pressure Apparatus Digital



SSI-68 Centrifuge Digital

With Digital Timer and RPM with Safety Lid Lock

- 8x15 ml
- 12x15 ml
- 16x15 ml



SSI-59 ECG Machine 3 & 12 Channels

- Built-in High Resolution Thermal Printer and External Printer Support
- Multi Color Touch Screen Option
- Weak Signal Detection and Anti-Noise Technology for Accurate Performance
- Real-Time ECG Waveforms Freezing and Review
- Built-In Data Management with Reports Review



SSI-60 Semi Auto Clinical Chemistry Analyser

- 150 open test programs
- Extensive Q.C. Program with L-J Graph
- Inbuilt Thermal Printer
- Dual Cuvette Facility
- 1000 test Result Storage
- Universal Power Adaptor for ease of use



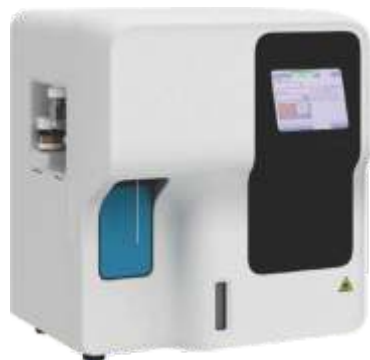
SSI-61 Elisa Plate Reader

- 100 test programs
- Built-in shaker with 3 speed variable mixing
- Compatible to various plate geometrics of 96 well microplates and in 8 or 12 well formats
- Single, dual and multiple wavelength reading option
- Minimum reading time 8 s for single wavelength
- Range: 405 nm, 450 nm, 492 nm and 630 nm. Optional filters 578 nm and 700 nm
- Self diagnostic capabilities
- Can perform various applications for microbiology using TNW software



SSI-62 Elisa Plate Washer

- Specially designed Manifold assembly to prevent any scratching on bottom of well
- Auto rinse facility while shut down
- Ability to wash single strip of 8 wells
- User programmable soak time, wash cycles and dispensing volume
- On board two plate incubator at 37°C with programmable timer
- Built-in stabilizer
- Programmable two timers



SSI-63 Haematology Analyser

- Easy to operate LCD touch screen graphical display
- Auto probe cleaning facility
- Auto clog detection facility
- Inbuilt robust thermal printer
- Easy sample and reagent entry through handheld barcode reader
- Three Part Differential



SSI-120 Single Drum Autoclave

The equipment is used to remove contamination from sterilizing injection liquids, dressing materials, rubber, surgical instruments, linen and plastic material. They are designed incorporating the latest technology and work under the saturated steam of adjustable pressure.

FEATURES

- Made of Complete S.S./Aluminum
- Complete with Stand
- Double Safety Valve .
- Electric Load-1.5kw Single Phase

Size available 12x12, 12x15, 12x20 inches



SSI-121 Vertical High Pressure Steam Sterilizer

These steam sterilizers work by heating the aqueous solutions above their boiling point. Featured with excellent performance and reliability, they meet the needs of hospitals and other medical institutions.

FEATURES

- High Pressure Steam sterilizer with Inner Chamber, Jacket & Lid of S.S.
- Outer Cover covered with Stainless Steel
- Electric load -3KW x 2=6KW Single Phase
- Size 16" x 24"

SSI-122 Vertical Double Walled Radial Locking Autoclave



- Inner chamber, outer chamber & support ring are fully made of stainless steel.
- Heaters cover stand & carrier/bucket are made of stainless steel.
- Lid made of thick machined stainless steel plate.
- Radial locking lid ensures user safety & safe locking.
- Lid is fitted with pressure gauge, spring loaded safety valve, double safety valve, manual exhaust valve, vacuum breaker as a safety device & water level indicator.
- Drain valve facilitates easy cleaning of the chamber.
- Moulded joint less silicon rubber gasket.
- All internal joints are argon arc welded, ground & polished to give crevice free internals.
- Miniature circuit breaker for mains on/off plus safety of control panel.
- Industrial grade energy efficient heaters reduce power bills drastically.

SSI-123 Horizontal Cylindrical Triple Walled High Pressure Autoclave

- The inner/outer chamber, steam jacket and boiler are made of heavy gauge SS with leak proof argon arc welding.
- The space between the outer chamber and steam jacket is filled with glass wool to minimize thermal losses.
- Hydraulically tested to withstand 2.5 times the working pressure.
- Steam boiler is fitted with water level indicator, pressure gauge, low water cut off device and automatic pressure control devices. Fitted with safety valve as a safety device.
- Drain valve is fitted at the side bottom for easy draining/clearing.
- This affords a complete safety to the working personnel against explosive opening.
- Two separate valves are provided for evacuating steam from inner chamber and jacket as and when desired.
- Sterilization cycle is controlled by single point multiport valve.
- The chamber discharge line is fitted with a moisture trap to absorb the condensate automatically thus preventing moistening of the loaded material to be sterilized.
- An automatic vacuum breaker is fitted to all units as a standard accessory in order to break vacuum in case of steam condensation.
- The flanged immersion type heating element made from a very high grade material provide fast formation of pressure in the system and are protected through a electric low water level cut off device.
- All sterilizers are provided with triple safety features through a "Piezostate" (automatic pressure control system) and a spring loaded safety valve fitted to the boiler/steam generator.
- The chamber is fitted with spring loaded safety valve and a dead weight release valve.
- To work on 220/230 or 440 volts, 3 phase, 50 Hz AC supply.

Size (Inches)	16 x 24	16 x 36	16 x 48	20 x 36	20 x 48
Inner Size (mm)	400 x 600	400 x 900	400 x 1200	500 x 900	500 x 1200
Capacity	78 Litres	115 Litres	165 Litres	165 Litres	121 Litres
Heater Load	6 KW	6 KW	9 KW	9 KW	9 KW

TECHNICAL SPECIFICATION

Gasket: made of joint less silicon rubber.

Exhaust pressure: manual through the exhaust valve

Sterilizing pressure: 1.2 to 1.5 kgf/cm² (15 to 20 psi) at 121°C

Operating pressure: from 15 psi to 20 psi

Pressure gauge: 0.2.1 kgf/cm² (30 psi)

Tubular stand and supporting ring: made of mild steel or stainless steel

Pressure Vessel= SS 304 Grade Stainless Steel

External Wall=SS 304 Grade Stainless Steel

Top Lid=SS 304 Grade Stainless Steel

Basket= SS 304 Grade Stainless Steel

INCLUDING

1. Automatic pressure cut off switch
2. Digital temperature indicator cum controller
3. Vacuum breaker
4. Water level indicator
5. Automatic self locking system
6. Automatic low water cut off switch
7. Moisture trap

OPTIONAL

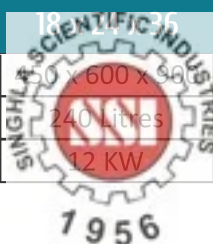
- A. Fully automatic PID purging system
- B. Fully automatic system with HMI PLC based autoclave with data logger digital pressure indicator cum controller, digital temperature controlled system can be installed on order.
- C. Multiport Valve



SSI-124 Horizontal Rectangular High Pressure Autoclave

- The inner/outer chamber, steam jacket and boiler are made of heavy gauge SS with leak proof argon arc welding.
- The space between the outer chamber and steam jacket is filled with glass wool to minimize thermal losses.
- Hydraulically tested to withstand 2.5 times the working pressure.
- Steam boiler is fitted with water level indicator, pressure gauge, low water cut off device and automatic pressure control devices. Fitted with safety valve as a safety device.
- Drain valve is fitted at the side bottom for easy draining/clearing.
- This affords a complete safety to the working personnel against explosive opening.
- Two separate valves are provided for evacuating steam from inner chamber and jacket as and when desired.
- Sterilization cycle is controlled by single point multiport valve.
- The chamber discharge line is fitted with a moisture trap to absorb the condensate automatically thus preventing moistening of the loaded material to be sterilized.
- An automatic vacuum breaker is fitted to all units as a standard accessory in order to break vacuum in case of steam condensation.
- The flanged immersion type heating element made from a very high grade material provide fast formation of pressure in the system and are protected through a electric low water level cut off device.
- All sterilizers are provided with triple safety features through a "Piezostate" (automatic pressure control system) and a spring loaded safety valve fitted to the boiler/steam generator.
- The chamber is fitted with spring loaded safety valve and a dead weight release valve.
- To work on 220/230 or 440 volts, 3 phase, 50 Hz AC supply.

Size (Inches)	18 x 18 x 36	24 x 24 x 30	24 x 24 x 48
Inner Size (mm)	450 x 450 x 900	600 x 600 x 900	600 x 600 x 1200
Capacity	180 Litres	320 Litres	430 Litres
Heater Load	12 KW	18 KW	18 KW



TECHNICAL SPECIFICATION

Gasket: made of joint less silicon rubber.

Exhaust pressure: manual through the exhaust valve

Sterilizing pressure: 1.2 to 1.5 kgf/cm² (15 to 20 psi) at 121°C

Operating pressure: from 15 psi to 20 psi

Pressure gauge: 0.2.1 kgf/cm² (30 psi)

Tubular stand and supporting ring: made of mild steel or stainless steel

Pressure Vessel= SS 304 Grade Stainless Steel

External Wall=SS 304 Grade Stainless Steel

Top Lid=SS 304 Grade Stainless Steel

Basket= SS 304 Grade Stainless Steel



- | | |
|------------------|---|
| INCLUDING | 1. Automatic pressure cut off switch |
| | 2. Digital temperature indicator cum controller |
| | 3. Vacuum breaker |
| | 4. Water level indicator |
| | 5. Automatic self locking system |
| | 6. Automatic low water cut off switch |
| | 7. Moisture trap |
| OPTIONAL | A. Fully automatic PID purging system |
| | B. Fully automatic system with HMI PLC based autoclave with data logger digital pressure indicator cum controller, digital temperature controlled system can be installed on order. |
| | C. Multiport Valve |

Anthropometer.....	11	Mayo's Instrument Trolley (Range-Premium).....	14
Autopsy Table.....	10	Mayo's Instrument Trolley (Range-Regular).....	14
Audiometer Digital	7	Medical Microscope.....	2
Autoclave.....	22,23,24	Mobile Operation Room Light LED	12
Baby Cradle.....	15	Models & Charts.....	20
Bed Pans With Cover S.S.....	13	Models.....	17
Bed Side Locker.....	13	Models.....	18
Binocular Microscope.....	1,2	Mortuary Chamber.....	10
Binocular Microscope Co-Axial.....	2	Mortuary Chamber.....	10
Biosafety Cabinet (S.S. & M.S.).....	6	Osteometric Table.....	11
Block Cabinet.....	5	Paper Strip Electrophoresis Horizontal.....	9
Bone and Meat Cutting Machine.....	10	Paper Strip Vertical.....	9
Blood Pressure Apparatus Mercurial.....	20	Patient Carrying Trolley.....	16
Blood Pressure Apparatus Digital.....	20	Perimeter.....	7
Chest Depth Caliper.....	11	Plain Bed.....	13
Chromatography Cabinet.....	8	Polygraph.....	7
Craniometer.....	11	Projection Microscope.....	3
Crash Cart.....	16	Physiograph.....	7
Cubic Craniophor.....	11	Revolving Stool-All S.S. Top Cushioned (Range-Premium).....	15
D.C. Power Supply Digital For Electrophoresis.....	9	Revolving Stool-All S.S. Top S.S. (Range-Delux).....	15
Dead Body Weighing Scale.....	11	Revolving Stool-EPC Top S.S. (Range-Regular).....	15
Dissecting Microscope.....	10	Rotary Microtome Spencer Type.....	4
Dissection Table & Cadaver Tank.....	21	Rotary Microtome Spencer Type.....	4
ECG Machine 3 & 12 Channels.....	21	Semi Automatic Microtome.....	4
Elisa Plate Reader.....	21	Semi Auto Clinical Chemistry Analyser.....	21
Elisa Plate Washer.....	21	Spirometer Digital	7
Elisa Plate Washer.....	21	Semi Fowler Bed.....	13
Examination Couch.....	16	Skin Fold Caliper.....	11
Examination Table.....	16	Slide Box Wooden.....	5
ESR Stand.....	20	Slide Cabinet Wooden.....	5
Food Trolley Adjustable Manual (Range Delux).....	14	Slide Staining Machine Microprocessor Control Linear (18 Stations).....	5
Fume Cupboard.....	6	Slide Tray Aluminum.....	5
Goniometer.....	11	Specimen Jar Rectangular With LID.....	11
Grossing Work Station.....	4	Spirometer.....	7
Haematology Analyser.....	21	Stereo Zoom Microscope.....	3
Hydraulic/Mechanical Operation Room.....	12	Submarine Electrophoresis.....	8
Hemoglobinometer.....	20	Suction Apparatus.....	16
Haemocytometer.....	20	Surgical Instrument Trays (S.S. with Cover).....	13
Instrument Trolley All SS(Range-Delux).....	14	Operation Table.....	12
Instrument Trolley EPC with SS Shelves (Range-Regular).....	15	Tissue Embedding Station.....	5
Instrument Trolley with Bowl & Bucket (Range Premium).....	14	Tissue Processor.....	5
I.V. Stand.....	16	TLC Kit.....	8
Kidney Tray S.S.	13	Ultra Violet Inspection Cabinet (U.V. Cabinet).....	8
Knife Dish.....	13	Urinal S.S.....	13
Laminar Air Flow S.S. (Horizontal).....	6	UV- Transilluminator.....	9
Microscope.....	3	Vari Pack.....	8
Microscopes Digital	1	Vertical Slab Gel (Student).....	9
Mandibulo Meter.....	11	Wintrobe Tube Stand for Six Tubes.....	20



SINGHLA SCIENTIFIC INDUSTRIES

5309/27, Punjabi Mohalla,
Ambala Cantt - 133001
Tel : 0171-2642878, 2642209, 4008453 (O)
: 0171-2643414, 4068453
singhla@rediffmail.com
www.polylabindia.com
www.singhlascientific.com